



Message From Director's Desk

At the School of Planning and Development, we focus on developing creative problem solving skills through innovation in teaching-learning systems. The School shapes its teaching and research agenda through constant exchanges with physical communities and communities of practice. This also allows us to position ourselves internationally. We prepare the future generations of planners, who are ethical, purposeful and diligent, to play their positive roles in a rapidly globalising society. SPD is in the process of positioning itself as a Knowledge Hub for Gurugram and the NCR through evidence based planning, capacity building, data management and training opportunities for working professionals. The intellectual strategy stems out of the need to educate a new generation of policy professionals capable of 'spatial thinking' who aspire to be policy entrepreneurs and decision-makers instead of decision-takers.



The School has been set up with a vision to establish an ecosystem of quality teaching and research, capable of constantly producing globally competitive knowledge and skills. It has been instrumental in laying the foundation of the Planning education in Gurgugram region for nearly a decade now. The post graduate course in Urban and Regional Planning is recognised by the Institute of Town Planners India (ITPI). Currently, the School has both national and international outreach for academic and research partnerships with reputed institutions like Queens University Belfast, University of Lincoln, and University of Otago, New Zealand, University of Nottingham.

- ◆ **Engagements with leading Global Universities for Academic and Research Activities**
- ◆ **National and International Internships and Study Tours**
- ◆ **Merit based Scholarships, GATE Scholarships, Haryana Domicile Scholarships**
- ◆ **Planning Studios based on Government Projects**
- ◆ **Faculty with International Experience**
- ◆ **Excellent Library and E-resources**



School of Planning and Development Programmes 2021

Bachelor of Planning- Urban and Regional

Eligibility:

The candidates should have passed the qualifying examination with 50% marks in Mathematics and 50% marks in aggregate in class 12 or equivalent*

Master of Planning- Integrated

Eligibility:

The candidates should have passed the qualifying examination with 50% marks in Mathematics and 50% marks in aggregate in class 12 or equivalent*

Master of Planning- Urban Planning

Master of Planning- Transport Planning

Eligibility:

Under- graduate degree in Planning/ Civil Engineering/ Architecture or Post graduate degree in Geography/ Economics/ Sociology from any University/ Institutions in India or abroad recognized by the Government of India

Minimum of 55% marks in under graduate or post graduate degree as applicable*

Master's in Policy and Governance

Eligibility:

Under- graduate degree in Planning/ Civil Engineering/ Architecture or Post graduate degree in Geography/ Economics/ Sociology/ Political Science from any University/ Institutions in India or abroad recognized by the Government of India

Minimum of 55% marks in undergraduate or postgraduate degree as applicable*

PhD - Planning and Public Policy

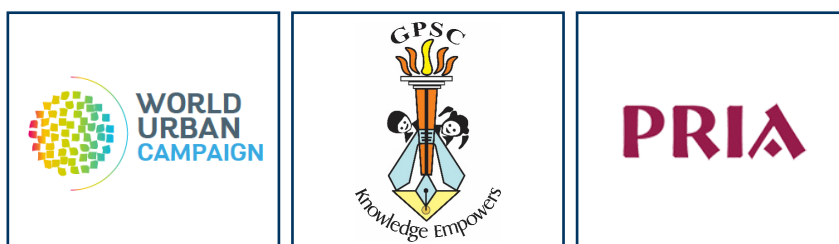
Eligibility:

The candidate should have a post- graduate degree in any specialisation of Planning with a minimum of 55% aggregate marks*

**As per the Government of India rules, these norms may be relaxed for SC and ST candidates*

Academic Partnerships

- ◆ Post- graduate course in Urban Planning is now an ITPI affiliated programme.
- ◆ School of Planning and Development is a member of the UN-Habitat's World Urban Campaign
- ◆ Completed LEED Studio for post- graduation in 'Area Planning' focusing on Gurugram in partnership with US Green Building Council (USGBC)
- ◆ Transport Infrastructure Plan for Gurugram in partnership with Gurugram Metropolitan Development Authority GMDA
- ◆ Prepared Regional Plan for Haldwani Rudrapur Nainital in partnership with World Wide Fund (WWF)
- ◆ Undertook Assessment of Transport Infrastructure for Agra Development Authority
- ◆ Undertook Environment Improvement and Development Plan preparation for Alwar in partnership with Alwar Municipal Council
- ◆ Master Plan for Sampla, Haryana for Town Planning Department Haryana, NCR Wing.



Internships



Students Speak



Shruti Sahariya: Batch 2018-20

School of Planning and Development has given me a platform for overall growth and development. It has changed my perspective on how Urban Planning can bring about changes in people's everyday life. The faculty here is committed to provide us with the best knowledge. They have made me realize what my strengths are and helped me work towards achieving my educational goals. The school has given us a great exposure by enabling our interactions with various stakeholders in the field. That in fact has opened so many doors for all of us as students. There is always a great balance between work and play and studying here truly has been a great experience.

Komal Vijjan: Batch 2018-20

As a second-year Master's student at SPD (Urban Planning) programme, I can reflect that it has furnished me with the ability to explore an array of extraordinary chances for my future. The most important element about the programme is the chance to grow as a person as well as academically and the professors here guide you at every step for your overall development. Apart from this, they have also contributed in providing the exposure of the professional world at the national and international levels through various seminars where we can connect with experts.



Kunal Jain: Batch 2018-2020

School of Planning and Development has truly developed me into a well-rounded person. The professors here are exemplary in their teaching styles. I feel extremely lucky to be in an environment that allows me to conduct research on what interests me the most. Gurugram, being a metro city has many opportunities in every area. Additionally, the School has many opportunities for student to get involved in extracurricular activities and has given me a rewarding ongoing postgraduate experience.

Aadya Sagar: Batch 2016-2020

Urban Planning consists of both design and economic development of cities and urban environments that encompasses all aspects that impact the public including; land use, transportation, public spaces, sanitation, air and water quality, infrastructure, recreation and communications etc. The four years at Sushant have been extremely insightful. I had a great exposure to learning with live studios and on ground experience by site and office visits. Most importantly the faculty members are very knowledgeable and supportive. They have guided me at every step of my academic training during the last four years.



PRACTICAL STUDIOS, FIELD TRIPS, SITE VISITS, STUDY TOURS @ SPD

THE HANGOUT SPOT @ SPD

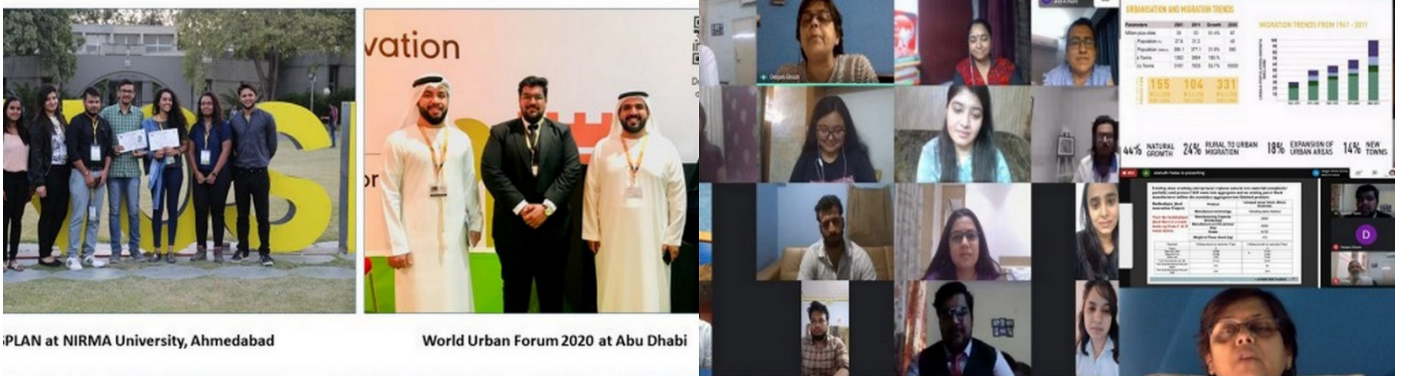


Achieving excellence in higher education through research, innovation, participatory governance and global presieving excellence in higher education through research, innovation, participatory governance and global pre

STUDENT EXPOSURE @ SPD

Unstoppable Learning @SPD

#learninginLockdown #sspdcfacultyssupport



PLAN at NIRMA University, Ahmedabad

World Urban Forum 2020 at Abu Dhabi

Achieving excellence in higher education through research, innovation, participatory governance and global presieving excellence in higher education through research, innovation, participatory governance and global pre

FUN DOING @ SPD

INTERACTIVE STUDYING @ SPD



Achieving excellence in higher education through research, innovation, participatory governance and global presieving excellence in higher education through research, innovation, participatory governance and global pre

LIBRARY: BEYOND LEARNING AND BOOKS

LAUNCH OF SPD @ INDIA HABITAT CENTRE



Achieving excellence in higher education through research, innovation, participatory governance and global presieving excellence in higher education through research, innovation, participatory governance and global pre

ADMISSION PROCEDURE

Apply Now
<http://bit.ly/31tZIH7>

Bachelor of Planning (Urban and Regional)

50% Weightage
on 12th Standard
Marks

50% Weightage
on Aptitude
Assessment

Selection
Letter

Master of Planning (Integrated)

50% Weightage
on 12th Standard
Marks

50% Weightage
on Aptitude
Assessment

Selection
Letter

Master of Planning (Urban Planning) (Transport Planning) Master's in Policy and Governance

60% Weightage
on previous
Degree (UG or PG)
Marks

20% Weightage
on Personal
Interview

20% Weightage
on Statement of
Purpose

Selection
Letter

PhD (Planning and Public Policy)

Entrance
Test

Personal
Interview

Selection
Letter

