

SCHOOL OF PLANNING AND DEVELOPMENT



Message from SPD Desk

The School of Planning and Development strives to be an exemplary planning school with a strong sense of excellence towards education, practice, research and scholarship. In response to today's pandemic, the faculty, staff, students and alumni of SPD aim to accelerate positive changes in the educational practices through its various digital endeavours.

The previous years were held in the midst of the pandemic induced online classes curtailing face-to-face interaction, yet we at SPD had a fun filled period with several learnings. We were able to make a smooth transition from face to face teaching to learning at a distance. Students were able to engage through online mode sometimes even directly with our vibrant cities and dynamic communities.

All this was possible due to our strong belief and values of creating socially conscious scholars who will transform the built environment for public well-being. Today, thanks to advancements in technology, we are able to operate in a hybrid style of schooling with ease. Students can learn in a variety of ways, including on-campus and off-campus pedagogies.



Prof. Preetha Sajin
Director, SPD

The coronavirus pandemic has provided us with an unprecedented chance to map a new path toward planning excellence and to build a stronger learning eco-system capable of catalysing the change of the built environment for public well-being. We are always attempting to concentrate our efforts on creative and entrepreneurial research and practice in order to establish SPD as a knowledge centre. At SPD, we have a collaborative and interdisciplinary learning environment that supports our efforts to mobilise knowledge through engagement with local, national, and international planning communities.

The School has been set up with a vision to establish an ecosystem of quality teaching and research, capable of constantly producing globally competitive knowledge and skills. It has been instrumental in laying the foundation of the Planning education in Gurugram region for nearly a decade now. The post graduate course in Urban and Regional Planning is recognized by the Institute of Town Planners India (ITPI). Currently, the School has both national and international outreach for academic and research partnerships with reputed institutions like Queens University Belfast, University of Lincoln, and University of Otago, New Zealand, University of Nottingham.

Engagements with leading Global Universities for Academic and Research Activities

National and International Internships and Study Tours

Merit based Scholarships, Haryana Domicile Scholarships

Planning Studios based on Government Projects

Faculty with International Experience

Excellent Library and E-resources



School of Planning and Development Programmes 2022

Bachelor of Planning (Four-year programme)

ITPI recognized

Eligibility:

The candidate must have passed the qualifying examination of class 12 or its equivalent with 50% marks in Mathematics and 50% marks in aggregate.*

B Plan and M Plan (Integrated) (Five-year programme)

ITPI recognized

Eligibility:

The candidate must have passed the qualifying examination of class 12 or its equivalent with 50% marks in Mathematics and 50% marks in aggregate.*

Master of Planning (Urban Planning) (Two-year programme)

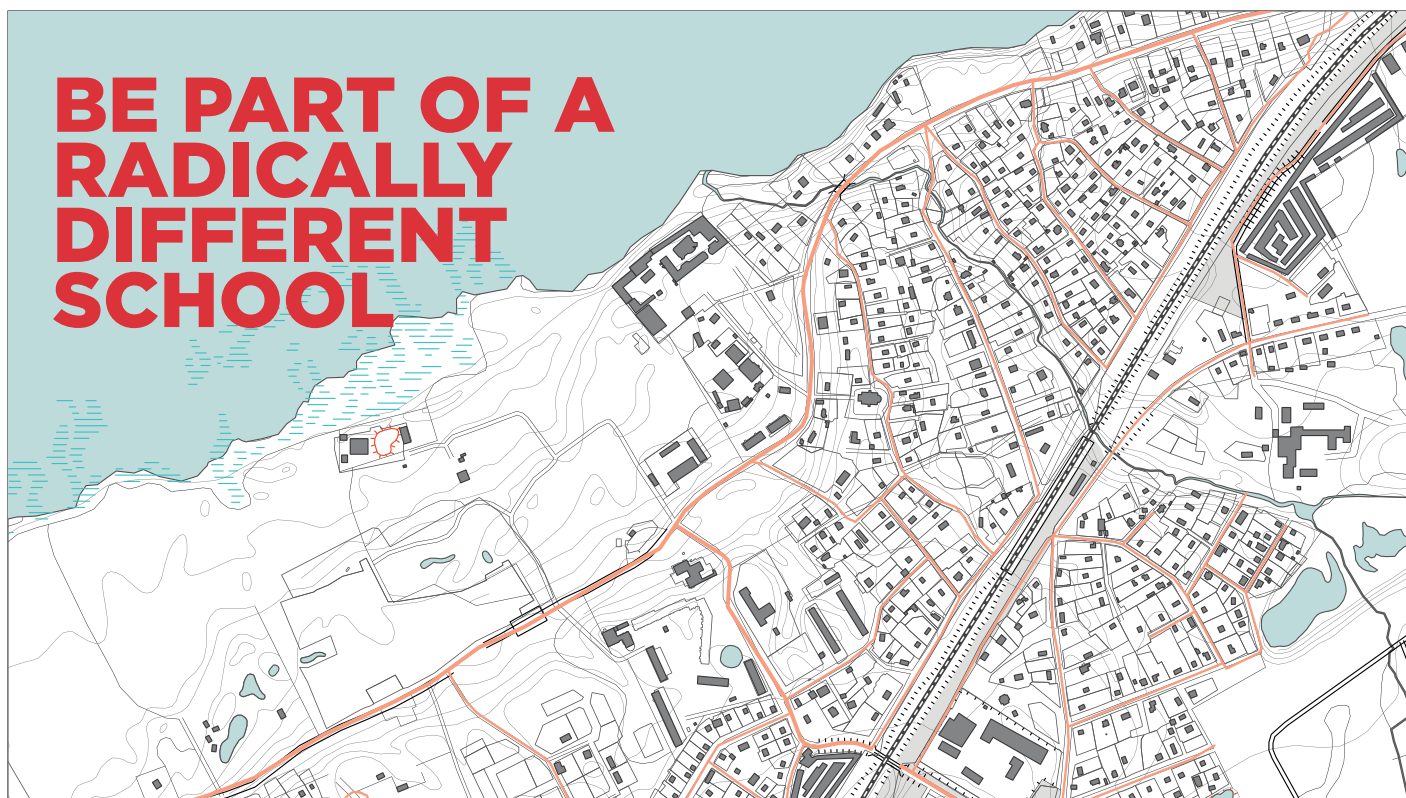
ITPI recognized

Eligibility:

The candidate must have Under Graduate degree in Planning/ Architecture/ Engineering or Post Graduate degree in Geography/Economics/ Sociology from any University/Institutions in India or Abroad recognized by Government of India.

A minimum of 55% aggregate marks is required in Under Graduate or Post Graduate degree as applicable*

*As per the Govt. of India rules, these norms may be relaxed for SC and ST candidates



- School of Planning and Development is a member of the UN-Habitat's World Urban Campaign
- Completed LEED Studio for post- graduation in 'Area Planning' focusing on Gurugram in partnership with US Green Building council (USGBC)
- Post- graduate course in Urban Planning is now an ITPI affiliated programme.
- Transport Infrastructure Plan for Gurugram in partnership with Gurugram Metropolitan Development Authority (GMDA)
- Prepared Regional Plan for Haldwani Rudrapur Nainital in partnership with World Wide Fund (WWF)
- Undertook Assessment of Transport Infrastructure for Agra Development Authority
- Undertook Environment Improvement and Development Plan preparation for Alwar in partnership with Alwar Municipal Council
- Master Plan for Sampla, Haryana for Town Planning Department Haryana, NCR Wing.

Collaborations with



Internship / Placement



Internship Details



Garima Munjal



Shananda Kundu



Sheena Sharma



Anshuman Kumar



Shoaib Ul Islam



Lokesh Meena



Subhra Sharma



Yashika Singhal



Kartik Vasisht



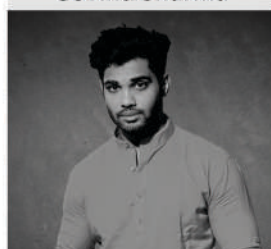
Govind Sharma



Diksha Tiwari



Sartaj Singh



Rahul Kasat



Paras Mongia



Ellora Ghosh



Anisha Sharma



Events



ADMISSION PROCEDURE

Apply Now
admissions.sushantuniversity.edu.in

Bachelor of Planning

50% Weightage on 12th Standard Marks

50% Weightage on Aptitude Assessment

Selection Letter

B Plan & M Plan (Integrated)

50% Weightage on 12th Standard Marks

50% Weightage on Aptitude Assessment

Selection Letter

Master of Planning (Urban Planning)

60% Weightage on previous Degree (UG or PG) Marks

20% Weightage on Personal Interview

20% Weightage on Statement of Purpose

Selection Letter

Ph.D - Planning & Public Policy

Entrance Test

Personal Interview

Selection Letter



Sushant
University
Erstwhile Ansal University Gurugram

Sushant University, School of Planning and Development, Sector 55, Golf Course Road, Gurgaon, Haryana
Toll Free: 1800 270 5520 | admissions@sushantuniversity.edu.in | www.sushantuniversity.edu.in